

These SIDs require minimum climb gradients of

BIBEX 1H, KEA 1H:
3.8% (235 FT/NM) until passing 700 due to obstacles.
3.8% (235 FT/NM) until passing 700 due to obstacles.
6.4% (390 FT/NM) to cross AV037 at or above 9000.

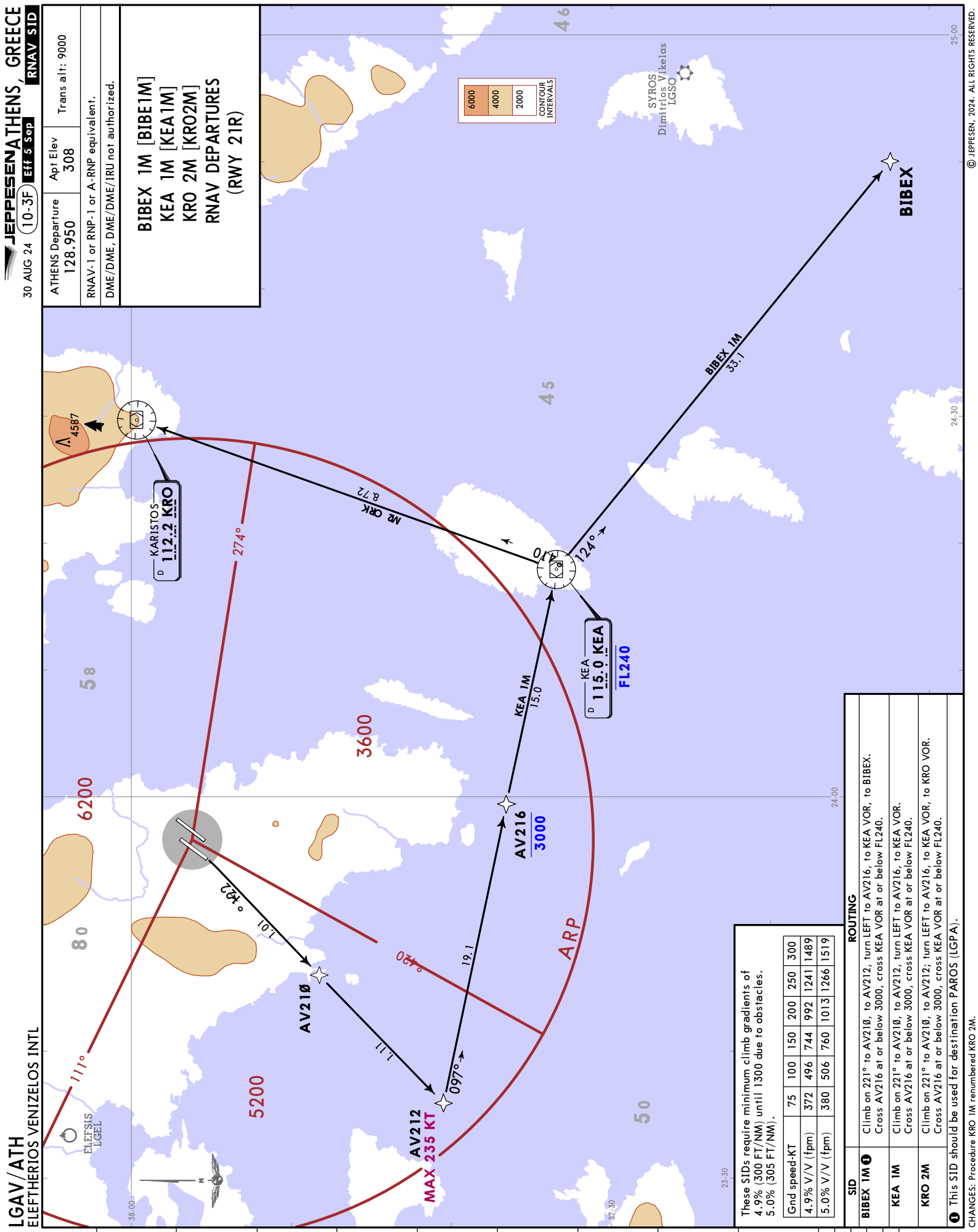
KRO 2H:
3.8% (235 FT/NM) until passing 700 due to obstacles.
6.4% (390 FT/NM) to cross AV037 at or above 9000.

Gnd speed-KT	75	100	150	200	250	300
3.8% V/V (fpm)	289	385	577	770	962	1154
6.4% V/V (fpm)	486	648	972	1296	1620	1944

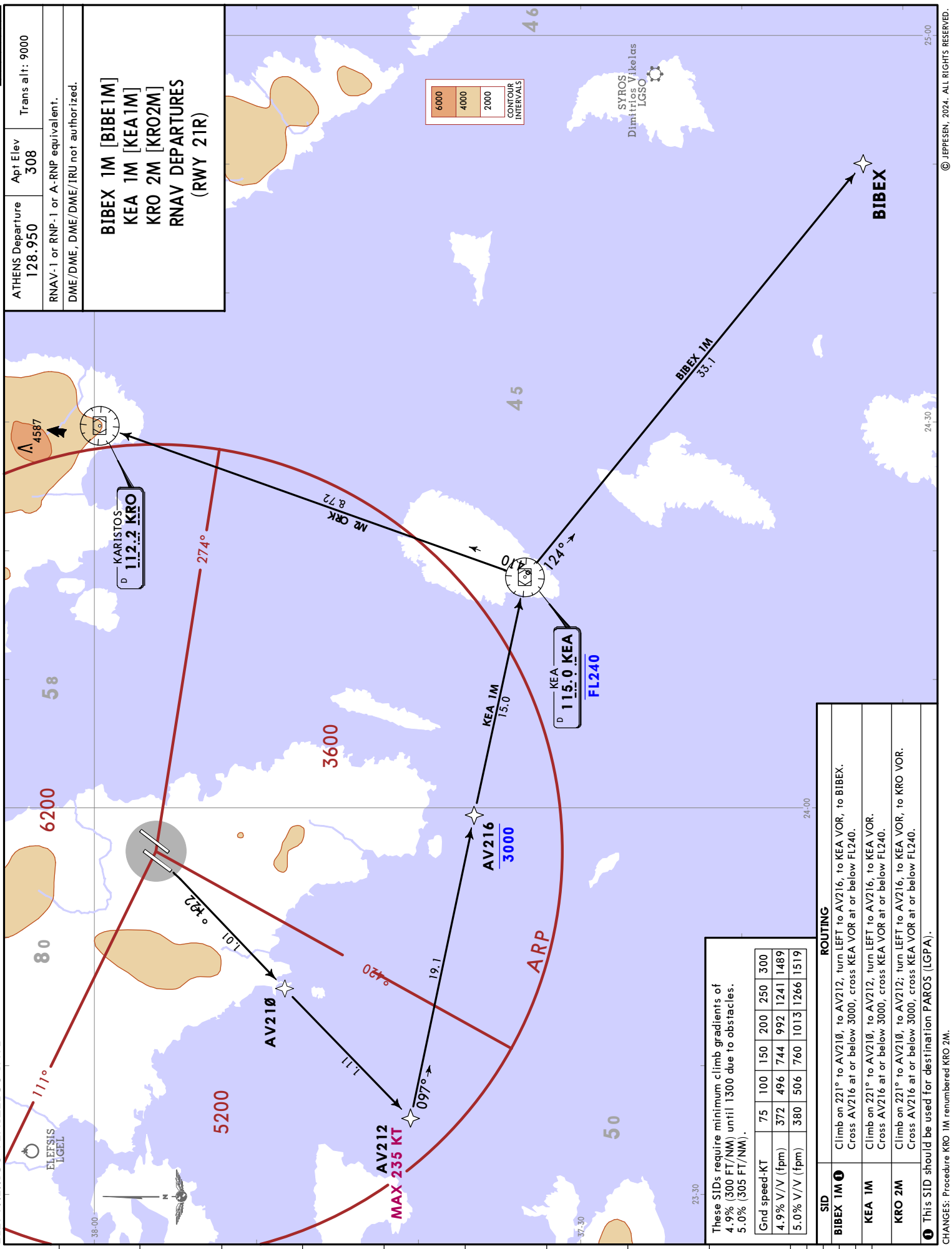
SID	ROUTING
BIBEX 1H	Climb on 031° to AV032, to AV035, to BIBEX.
KEA 1H	Climb on 031° to AV032, to AV035, to KEA VOR. Cross KEA VOR at or below FL240.
KRO 2H	Climb on 031° to AV032, to AV037, to KRO VOR.

1 This SID should be used for destination PAROS (LGPA).

CHANGES: Procedure KRO 1H renumbered KRO 2H.



LGAV/ATH
ELEFTHERIOS VENIZELOS INTL



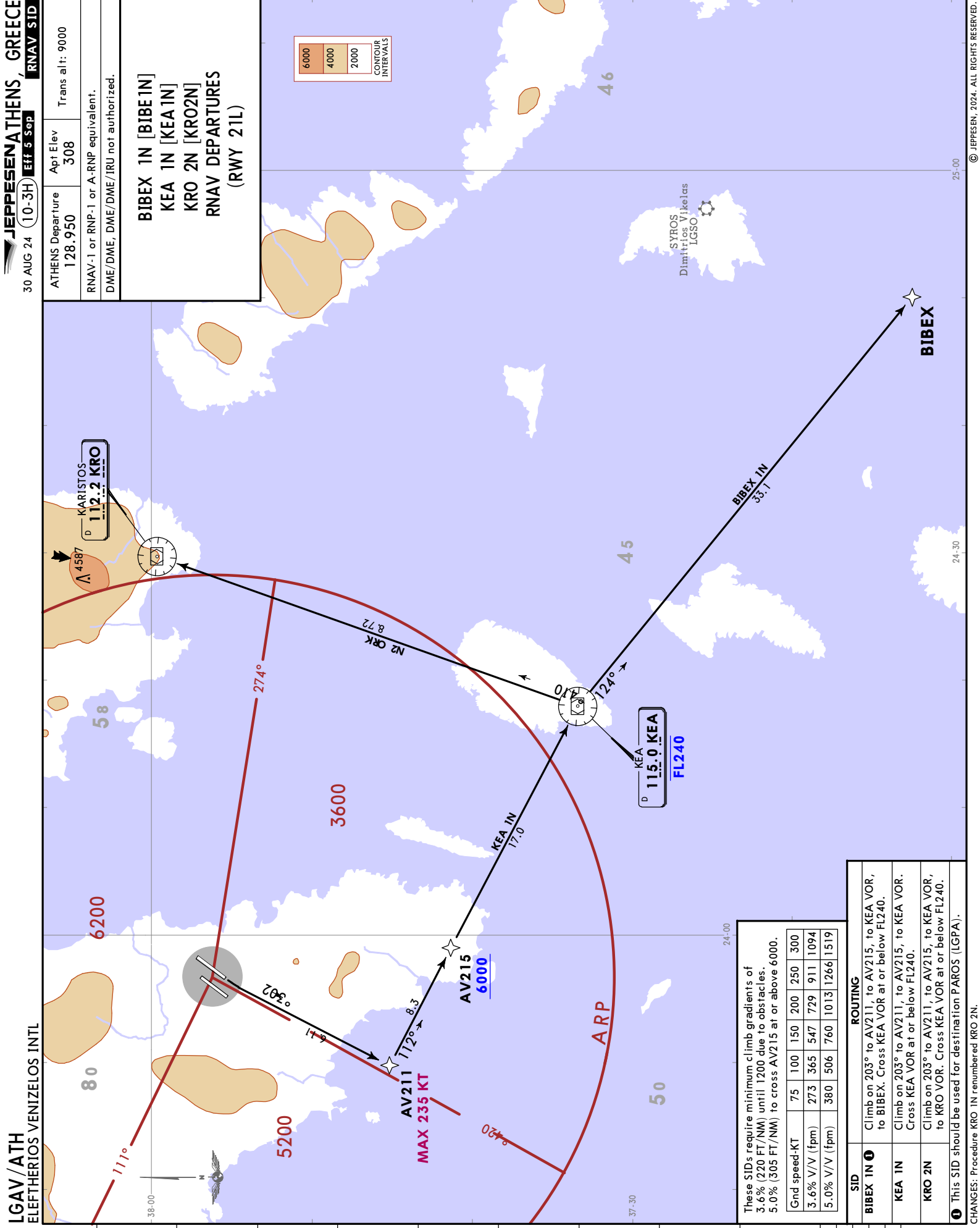
30 AUG 24 10-3F Eff 5 Sep
ATHENS Departure 128.950
Apt Elev 308
Trans alt: 9000
RNAV-1 or RNP-1 or A-RNP equivalent.
DME/DME, DME/DME/IRU not authorized.
BIBEX 1M [BIBE1M]
KEA 1M [KEA1M]
KRO 2M [KRO2M]
RNAV DEPARTURES
(RWY 21R)

These SIDs require minimum climb gradients of
4.9% (300 FT/NM) until 1300 due to obstacles.
5.0% (305 FT/NM).

Grnd speed-KT	75	100	150	200	250	300
4.9% V/V (fpm)	372	496	744	992	1241	1489
5.0% V/V (fpm)	380	506	760	1013	1266	1519

SID	ROUTING
BIBEX 1M	Climb on 221° to AV210, to AV212, turn LEFT to AV216, to KEA VOR, to BIBEX. Cross AV216 at or below 3000, cross KEA VOR at or below FL240.
KEA 1M	Climb on 221° to AV210, to AV212, turn LEFT to AV216, to KEA VOR. Cross AV216 at or below 3000, cross KEA VOR at or below FL240.
KRO 2M	Climb on 221° to AV210, to AV212; turn LEFT to AV216, to KEA VOR, to KRO VOR. Cross AV216 at or below 3000, cross KEA VOR at or below FL240.

1 This SID should be used for destination PAROS (LGPA).



LGAV/ATH

ELEFTHERIOS VENIZELOS INTL



JEPPESSEN

ATHENS, GREECE

15 MAR 24

10-3K

Eff 21 Mar

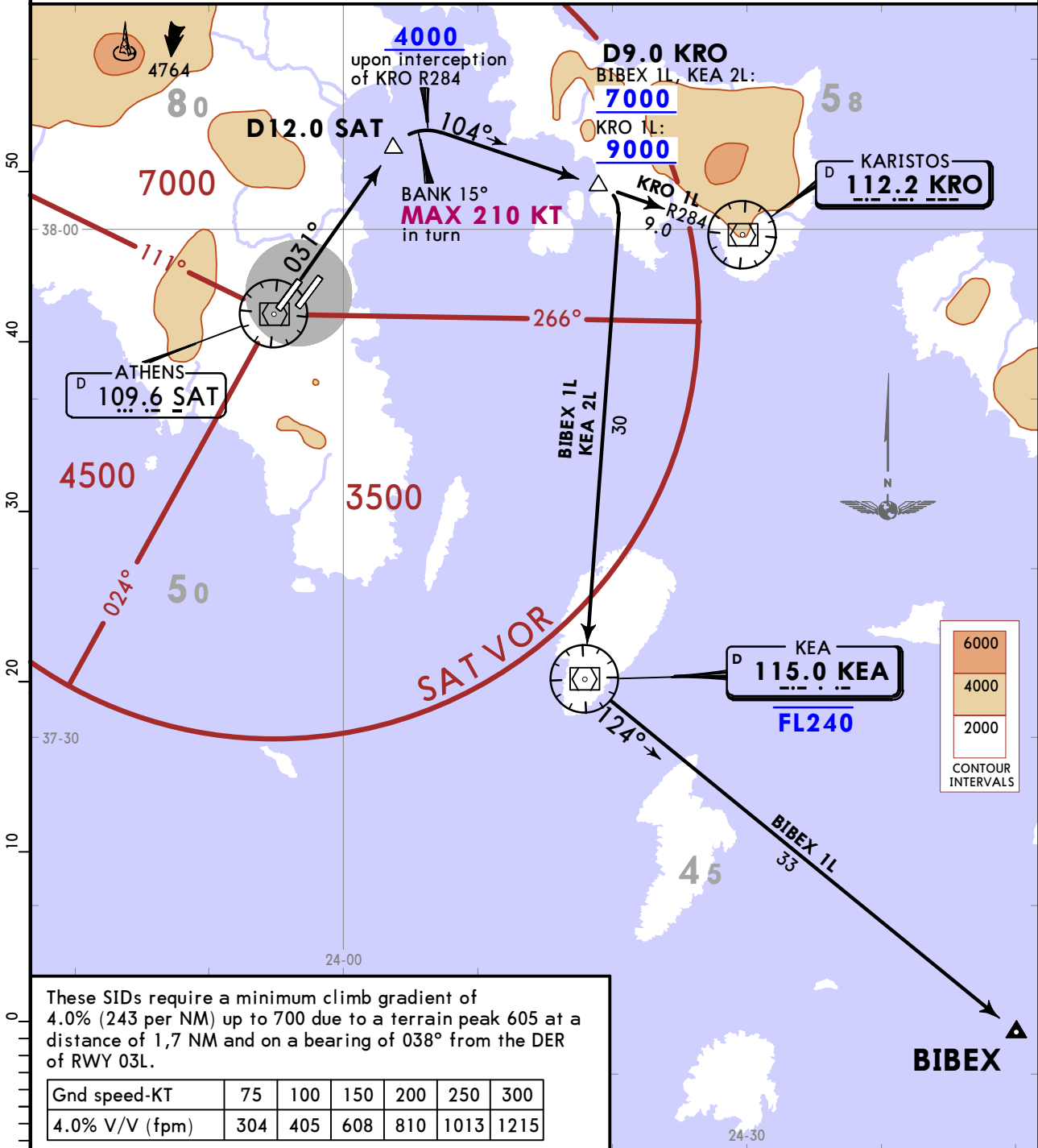
SID

ATHENS Departure
128.950

Apt Elev
308

Trans alt: 9000
Level restrictions are applied in case of radar failure and if not otherwise instructed by ATC, in order to secure vertical separation when flying on these SIDs and on specifically related SIDs from parallel RWY 03R.

BIBEX 1L [BIBE1L]
KEA 2L [KEA2L]
KRO 1L [KRO1L]
DEPARTURES
(RWY 03L)



SID	ROUTING
1 BIBEX 1L	Climb on SAT R031, at D12.0 SAT, turn RIGHT, intercept KRO R284 inbound to KRO VOR, at D9.0 KRO turn RIGHT to KEA VOR, intercept KEA R124 to BIBEX. 1 Should be used for destination LGPA.
KEA 2L	Climb on SAT R031, at D12.0 SAT, turn RIGHT, intercept KRO R284 inbound to KRO VOR, at D9.0 KRO turn RIGHT to KEA VOR.
KRO 1L	Climb on SAT R031, at D12.0 SAT, turn RIGHT, intercept KRO R284 inbound to KRO VOR.

LGAV/ATH

ELEFTHERIOS VENIZELOS INTL

15 MAR 24

10-3N

Eff 21 Mar

ATHENS, GREECE

SID

ATHENS Departure
128.950

Apt Elev
308

Trans alt: 9000
1. These SIDs are not available for initial flight planning.
2. No initial track guidance.

BIBEX 1K [BIBE1K]

KEA 2K [KEA2K]

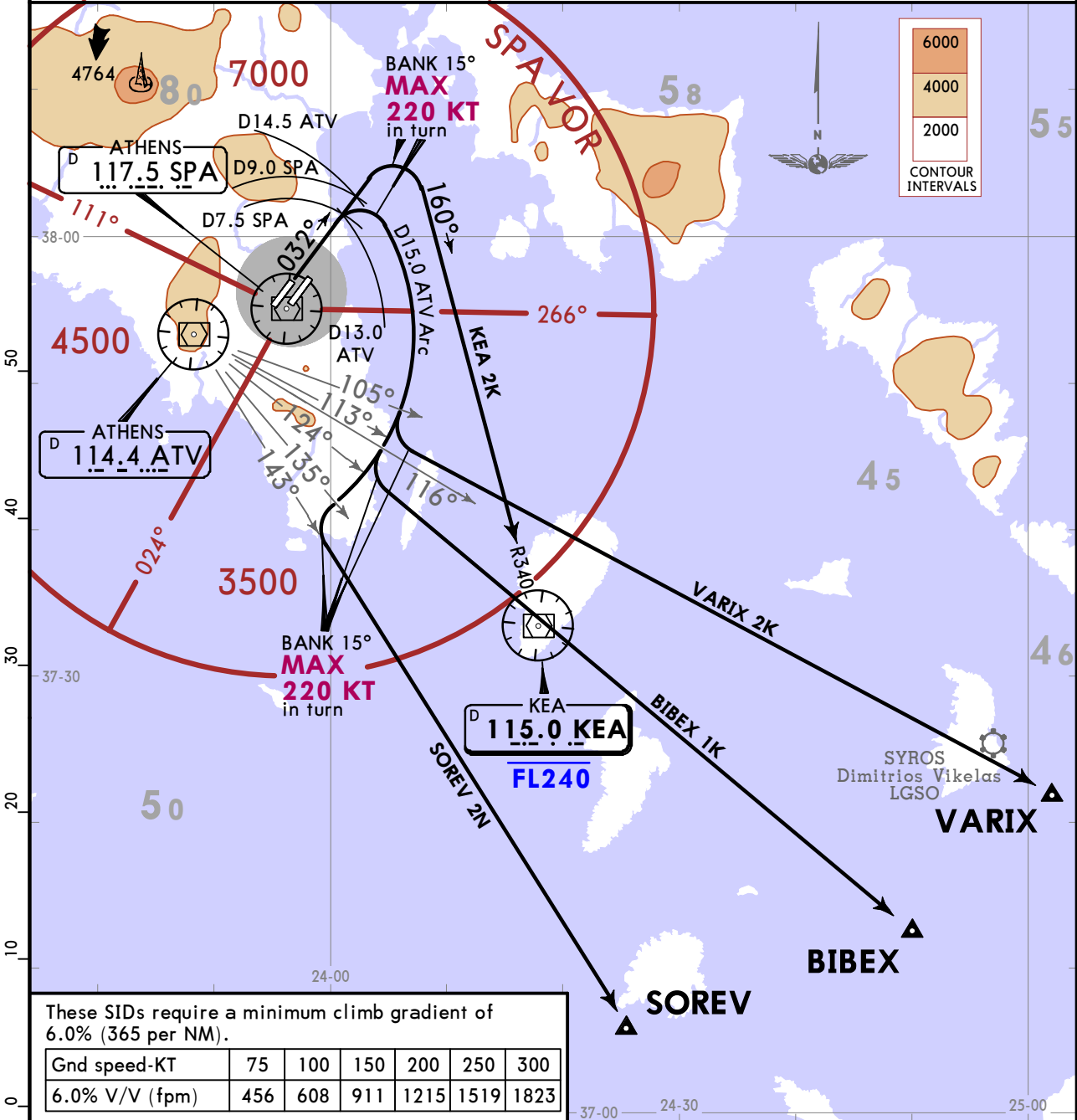
SOREV 2N [SORE2N]

VARIX 2K [VARI2K]

DEPARTURES

(RWY 03L)

BASED ON SPA VOR/DME - ATV VOR/DME



These SIDs require a minimum climb gradient of 6.0% (365 per NM).

Gnd speed-KT	75	100	150	200	250	300
6.0% V/V (fpm)	456	608	911	1215	1519	1823

SID	ROUTING
1 BIBEX 1K	Climb on 032° RWY axis to D7.5 SPA (D13.0 ATV), turn RIGHT, intercept and follow D15.0 ATV Arc, when passing ATV R116 turn LEFT, intercept ATV R124 to BIBEX. 1 Should be used for destination LGPA.
KEA 2K	Climb on 032° RWY axis to D9.0 SPA (D14.5 ATV), turn RIGHT, intercept KEA R340 inbound to KEA VOR.
SOREV 2N	Climb on 032° RWY axis to D7.5 SPA (D13.0 ATV), turn RIGHT, intercept and follow D15.0 ATV Arc, when passing ATV R135 turn LEFT, intercept ATV R143 to SOREV
VARIX 2K	Climb on 032° RWY axis to D7.5 SPA (D13.0 ATV), turn RIGHT, intercept and follow D15.0 ATV Arc, when passing ATV R105 turn LEFT, intercept ATV R113 to VARIX.

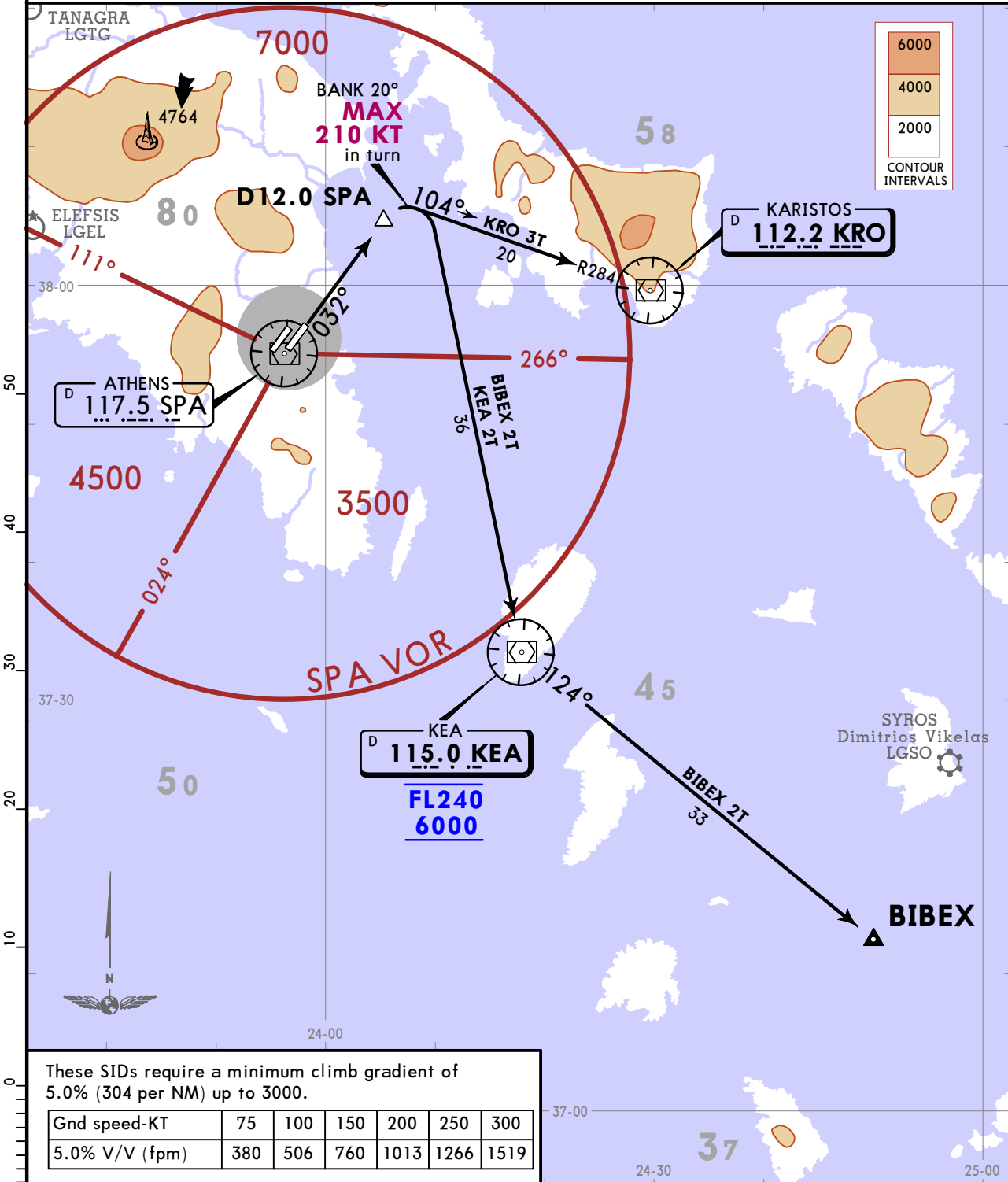
LGAV/ATH
ELEFTHERIOS VENIZELOS INTL

15 MAR 24 10-3S Eff 21 Mar

ATHENS, GREECE
SID

ATHENS Departure
128.950
Apt Elev
308
Trans alt: 9000

BIBEX 2T [BIBE2T]
KEA 2T [KEA2T]
KRO 3T [KRO3T]
DEPARTURES
(RWY 03R)
BASED ON SPA VOR

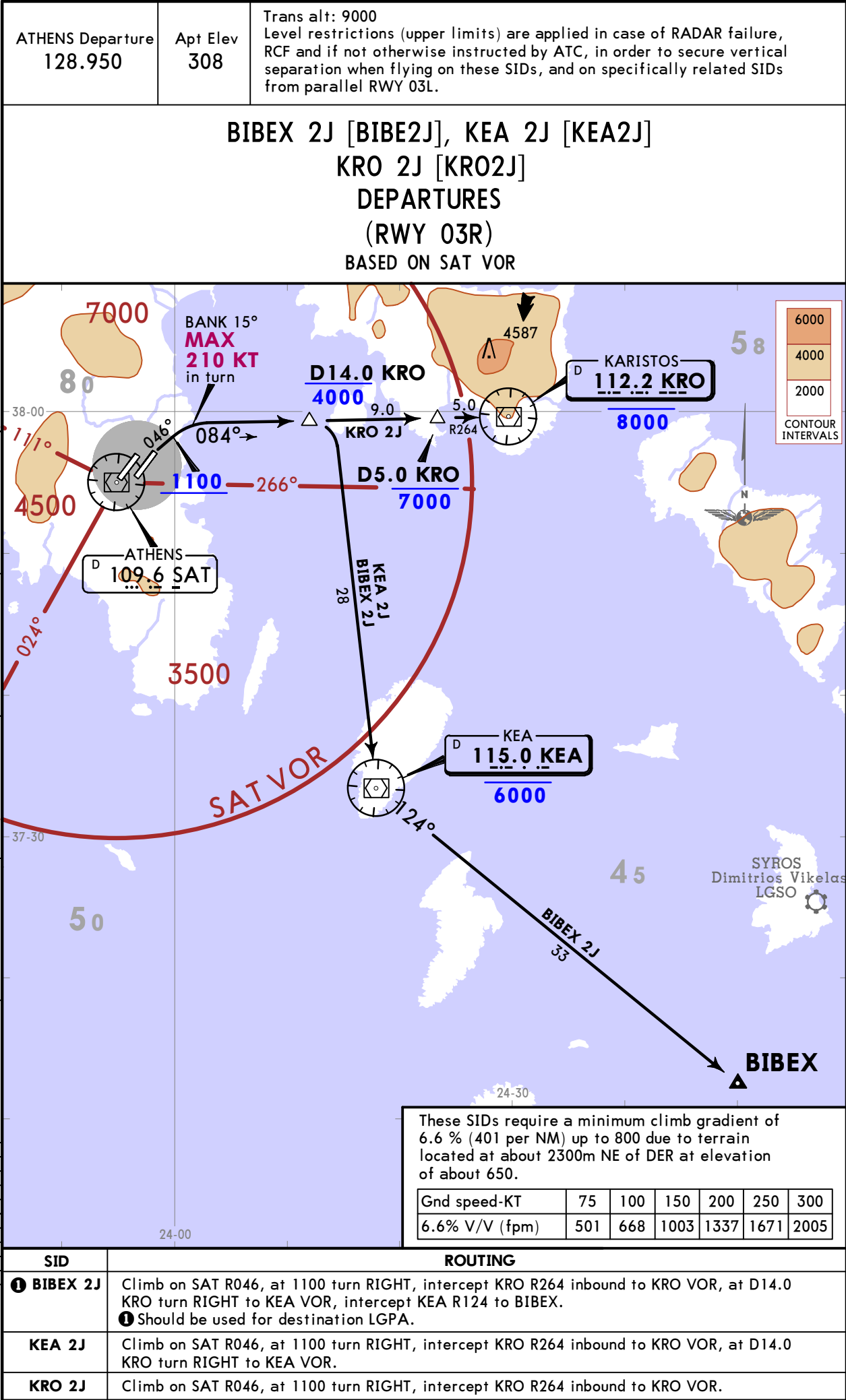


SID	ROUTING
1 BIBEX 2T	Climb on SPA R032, at D12.0 SPA turn RIGHT to KEA VOR, turn LEFT, intercept KEA R124 to BIBEX. 1 Should be used for destination LGPA.
KEA 2T	Climb on SPA R032, at D12.0 SPA turn RIGHT to KEA VOR.
KRO 3T	Climb on SPA R032, at D12.0 SPA turn RIGHT, intercept KRO R284 inbound to KRO VOR.

LGAV/ATH
ELEFTHERIOS VENIZELOS INTL

JEPPESEN
3 MAY 24 10-3U

ATHENS, GREECE
SID



LGAV/ATH

ELEFTHERIOS VENIZELOS INTL

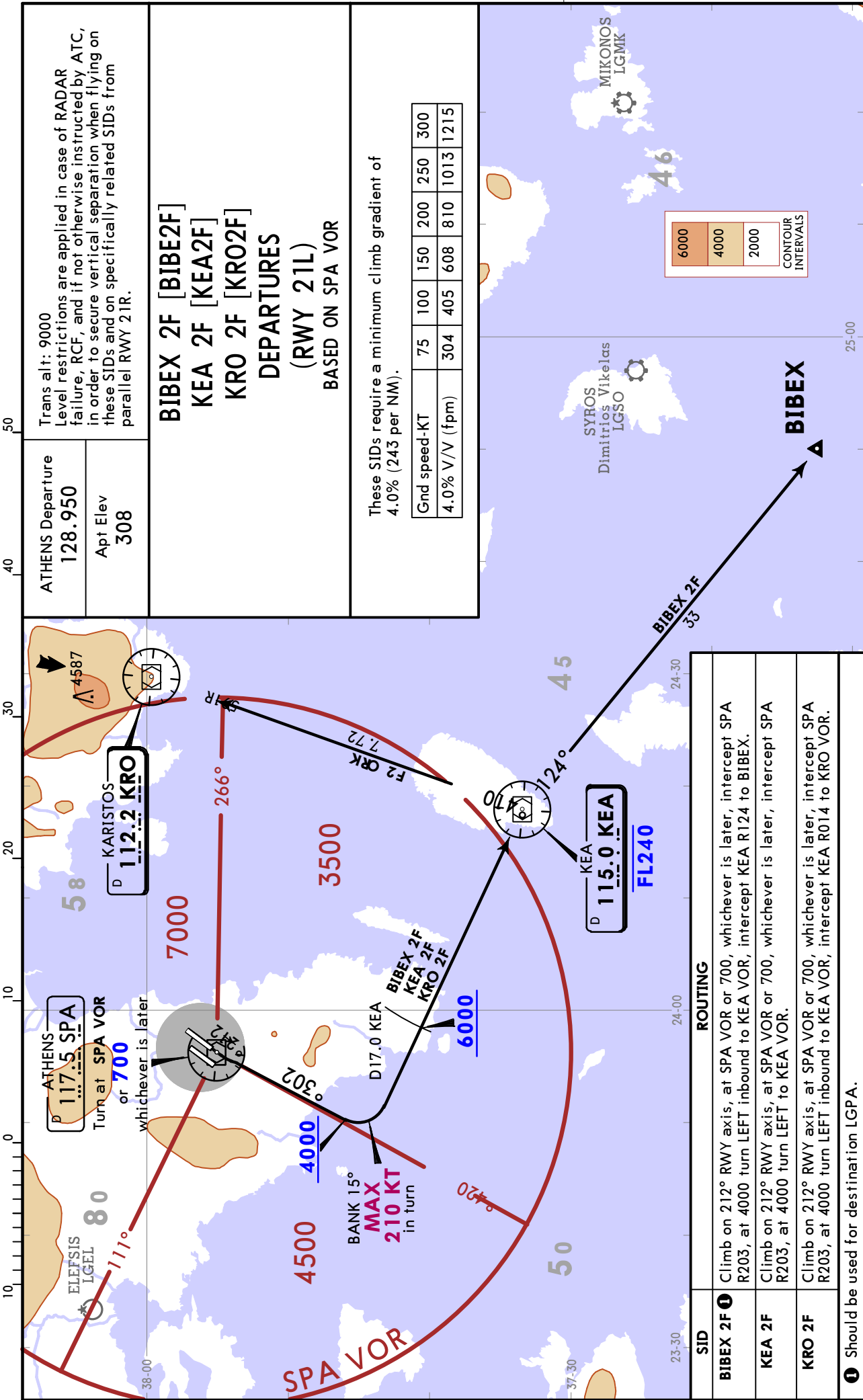
31 MAY 24

10-3W

Eff 13 Jun

ATHENS, GREECE

SID



LGAV/ATH

ELEFTHERIOS VENIZELOS INTL

31 MAY 24

10-3X1

Eff 13 Jun

ATHENS, GREECE

SID

